

PT PURADELTA LESTARI TBK
MANAGEMENT PRESENTATION



Deltamas

FEBRUARY 2016
STRICTLY CONFIDENTIAL



DISCLAIMER



THIS PRESENTATION IS FOR INFORMATION PURPOSES ONLY. IT IS NOT, IS NOT INTENDED TO BE, AND SHALL NOT BE CONSTRUED AS, AN OFFER, INDUCEMENT, INVITATION, SOLICITATION, COMMITMENT OR ADVERTISEMENT WITH RESPECT TO THE PURCHASE, SUBSCRIPTION OR SALE OF ANY SECURITY AND NO PART OF IT SHALL FORM THE BASIS OF, OR BE RELIED UPON IN CONNECTION WITH, ANY CONTRACT OR COMMITMENT WHATSOEVER.

The information that follows is a presentation of general background information about PT Puradelta Lestari Tbk. (the "Company") prepared by the Company as of 31 December 2015.

This presentation has been prepared for information purposes only. None of the information appearing in this presentation may be distributed to the press or other media or reproduced or redistributed in the whole or in part in any form at any time. Any recipient of this presentation and its directors, officers, employees, agents and affiliates must hold this presentation and any information provided in connection with this presentation in strict confidence and may not communicate, reproduce, distribute or disclose to any other person, or refer to them publicly, in whole or in part. This presentation is not for publication, circulation or use in the United States and may not be transmitted or taken into the United States.

This presentation does not constitute an offer to sell or the solicitation of an offer to buy any securities of the Company in the United States or any other jurisdiction in which such offer, solicitation or sale would be unlawful under the securities laws of any such jurisdiction, and neither this presentation nor anything contained herein shall form the basis of or be relied on in connection with any contract or commitment whatsoever.

This presentation may contain forward-looking statements and other information that involve risks, uncertainties and assumptions. Forward-looking statements are statements that concern plans, objectives, goals, strategies, future events or performance and underlying assumptions and other statements that are other than statements of historical fact, including, but not limited to, those that are identified by the use of words such as "anticipates", "believes", "estimates", "expects", "intends", "plans", "predicts", "projects" and similar expressions. Such forward-looking statements include, without limitation, statements relating to the competitive environment in which the Company operates, general economic and business conditions, political, economic and social developments in the Asia-Pacific region (in particular, changes in economic growth rates in Indonesia and other Asian economies), the Company's landbank, costs and liabilities, customer diversification endeavors, the industry of the Company and other factors beyond the Company's control. Actual outcomes may vary materially from those indicated in the applicable forward-looking statements. Any forward-looking statement or information contained in this presentation speaks only as of the date the statement was made. None of the Company, its directors, commissioners, officers, employees, agents, advisers, affiliates or any other person assumes responsibility for the accuracy, reliability and completeness of the forward-looking statements contained in this presentation, and none of the Company, its directors, commissioners, officers, employees, agents, advisers, affiliates or any other person assumes any obligation to update any information contained in this presentation or to publicly release any revisions to any forward-looking statements to reflect actual results or events or circumstances that occur or that it becomes aware of after the date of this presentation. You should not place undue reliance on any forward-looking statements.

Accordingly, no representation or warranty, either expressed or implied, is provided by the Company, its directors, commissioners, officers, employees, agents, advisers, affiliates or any other person in relation to the accuracy, completeness or reliability of the information contained in this presentation, nor is it intended to be a complete statement or summary of the resources, markets or developments referred to in this presentation. It should not be regarded by recipients as a substitute for the exercise of their own judgment.

By accepting delivery of this presentation, the recipient agrees to accept and be bound by the statements, restrictions and limitations set forth herein and is deemed to have represented and agreed that the recipient and any account the recipient represents is (i) located outside the United States within the meaning of Regulation S under the U.S. Securities Act of 1933, as amended (the "Securities Act") or (ii) the recipient is a dealer or other professional fiduciary holding a discretionary account or similar account (other than an estate or trust) for the benefit and account of a person who is not, and each person on whose behalf the recipient is viewing this presentation is not, a US person as defined in Regulation S under the Securities Act.

Important Milestones in 2015

2015 in Brief

May

Jun

Jul

Aug

Sep

Oct

Nov

Dec

Initial Public Offering and being listed in IDX

60 Ha Industrial land sales to SAIC GM Wuling

Commencement of serviced apartment construction

Loan repayment

Interim dividend distribution of Rp 578 billion



DMAS listing in IDX



SAIC GM Wuling Construction Entrance



Groundbreaking of Serviced Apartment



Serviced Apartment Construction Progress as of Nov 2015

Rapid Industrial Development in Kota Deltamas

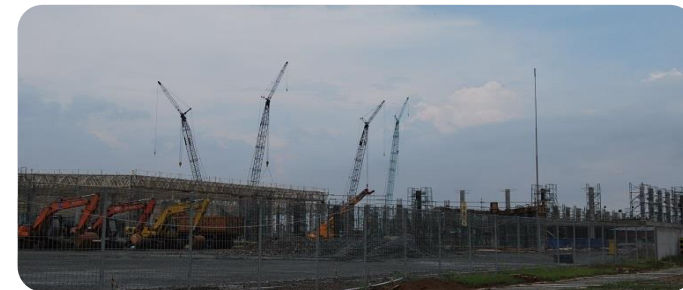
Our anchor tenants are speeding up their construction progress



SAIC GM Wuling Construction Progress



Maxxis Indonesia Construction Progress



Mitsubishi Construction Progress

Serviced Apartment Progress

Our Serviced Apartment is estimated to operate soon in 2016



**Serviced Apartment
Construction Progress
as of November 2015**



**Serviced Apartment
Construction Progress
as of February 2016**



**Serviced Apartment
Construction Progress
as of February 2016
(different angle)**

Facilities and Infrastructure Development in Kota Deltamas

We continuously develop facilities and infrastructure in Kota Deltamas to support industrial, commercial, and residential activities in our area



Infrastructure Development – Access to AEON mall future development site

2015 Achievement and 2016 Target

- Our marketing sales in 2015 was 90.5 Ha land area or equivalent to Rp 1,718 billion, with main contribution from industrial land sales.
- In 2016, we target marketing sales of 50 Ha land area in Kota Deltamas or equivalent to around Rp 1.3 trillion.
- Our capex in 2016 will be in the range of Rp 1.0 trillion – Rp 1.1 trillion, mostly used for infrastructure and investment property development.

THANK YOU

For Further Information:

PT Puradelta Lestari Tbk.
Marketing Office Kota Deltamas
Jl. Tol Jakarta-Cikampek KM 37
Cikarang Pusat – Bekasi 17530, Indonesia

Phone : +62 21 8997 1188
Fax : +62 21 8997 2029
Email : finance@deltamas.co.id
ricardo@deltamas.co.id
Website : www.kota-deltamas.com